



**Firmware Version:** v2.02.002/  
v2.11.002  
**Published:** Feb 13, 2012

These release notes include important information about D-Link switch firmware revisions. Please verify that these release notes are correct for your switch:

- If you are installing a new switch, please check the hardware version on the device label; make sure that your switch meets the system requirement of this firmware version. Please refer to [Revision History and System Requirement](#) for detailed firmware and hardware matrix.
- If the switch is powered on, you can check the hardware version by typing "show switch" command via Telnet or by checking the device information page on the web graphic user interface.
- If you plan to upgrade to the new firmware release, please refer to the [Upgrade Instructions](#) for the correct firmware upgrade procedure.

For more detailed information regarding our switch products, please refer to [Related Documentation](#).

You can also download the switch firmware, D-View modules and technical documentation from <http://tsd.dlink.com.tw>.

### Content:

Revision History and System Requirement .....	2
Upgrade Instructions.....	2
Upgrade using CLI (via Telnet).....	2
Upgrade using Web-UI.....	3
Upgrade using SmartConsole Utility.....	5
New Features.....	8
Changes of MIB & D-View Module.....	9
Changes of Command Line Interface.....	10
Problem Fixed .....	11
Known Issues.....	11
Related Documentation .....	12

## Revision History and System Requirement:

Firmware Version	Date	Model	Hardware Version
Runtime: v2.11.002 Boot: 1.00.002	2011/02/13	DES-1210-28	B1 (f/w not compatible to ver.A1)
Runtime: v2.02.002 Boot: 1.00.004		DES-1210-08P	A1
Runtime: v2.02.002 Boot: 1.00.003		DES-1210-28 DES-1210-28P DES-1210-52	A1
Runtime: v2.10.000 Boot: 1.00.001	2011/11/28	DES-1210-28	B1 (f/w not compatible to ver.A1)
Runtime: v2.01.002 Boot: 1.00.004	2011/04/01	DES-1210-08P	A1
Runtime: v2.01.002 Boot: 1.00.003		DES-1210-28 DES-1210-28P DES-1210-52	A1
Runtime: v2.00.011 Boot: 1.00.004		DES-1210-08P	A1
Runtime: v2.00.011 Boot: 1.00.003	2010/09/20	DES-1210-28	A1
		DES-1210-28P	A1
		DES-1210-52	A1
Runtime: v1.00.021 Boot: 1.00.002	2010/06/15	DES-1210-28	A1
Runtime: v1.00.018 Boot: 1.00.002	2009/11/20	DES-1210-28	A1
		DES-1210-52	A1
Runtime: v1.00.014 Boot: 1.00.002	2009/08/20	DES-1210-28	A1
		DES-1210-52	A1

## Upgrade Instructions:

D-Link Smart Switches support firmware upgrade via HTTP, TFTP server and SmartConsole utility. You can download the firmware from D-Link web site <http://tsd.dlink.com.tw>, and copy the downloaded firmware to the TFTP server folder. Please make sure that the TFTP server is accessible from the switch via networks.

**\* It is not necessary to upgrade boot code on the switch.**

### Upgrade using CLI (via Telnet)

1. Make sure the network connection between the switch and PC is active.
2. Use software that supports telnet, for example, HyperTerminal or Telnet command in Microsoft Windows, to connect to the switch. If you are using Telnet command, type the command followed by the switch IP address, eg. *telnet 10.90.90.90*.
3. The logon prompt will appear.

The switch will prompt the user to enter his/her username and password. It should be noted that upon the initial connection, both the default user name and password are **admin**.

To upgrade the switch firmware, execute the following command:

Command	Function
Download {firmware_fromTFTP tftp://ip-address/filename   cfg_fromTFTP tftp://ip-address/filename}(1)	Download firmware file from the TFTP server to the switch.

When completing firmware upgrade, the following messages will pop up.

```
Device will reboot after firmware upgraded successfully
Image upgraded successfully
```

4. Execute the following command to check the firmware version and switch's information.

Command	Function
show switch	Display the information of current firmware and boot version.

## Example:

### 1. DES-1210-28:

```
Command: download firmware_fromTFTP tftp://10.90.90.91 DES-1210-28_A1_
2.00.011.hex
Device will reboot after firmware upgraded successfully
Image upgraded successfully
```

### 2. DES-1210-28:

```
Command: show switch
DES-1210-28> show switch
System name           :
System Contact        :
System Location       :
System up time        : 0 days, 1 hrs, 8 min, 36 secs
System Time           : 01/01/2009 01:58:42
System hardware version : B1
System firmware version : 2.10.000
System boot version    : 1.00.001
System Protocol version : 2.001.004
System serial number   : LABDES1228008
MAC Address           : 00-12-28-00-08-00
```

## Upgrade using Web-UI

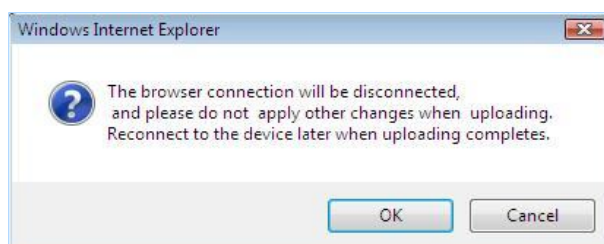
1. Connect a workstation installed with java SE runtime environment to any port of the switch.
2. Open the web browser from the workstation and enter the IP address of the switch. The switch's default IP address is 10.90.90.90.
3. Enter administrator's password when prompted. The password is **admin** by default.
4. To update switch's firmware or configuration file, select **Tools > Firmware Backup & Upgrade** from the banner.



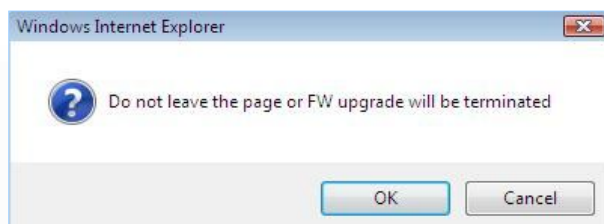
### 5. Two options : **HTTP** or **TFTP**

### 6. Select **HTTP** to upgrade with the firmware in your local PC drives.

- Click **Browse** to browse your inventories for a saved firmware file
- Click **Upgrade** after selecting one
- Click **OK** to continue upgrade

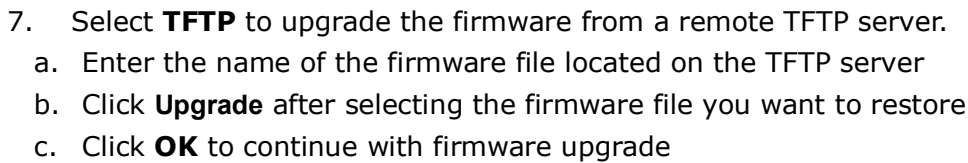


### d. Click **OK** to continue



- Wait until the "Firmware Upgrade Successful" message pops up and login again after device boots up.

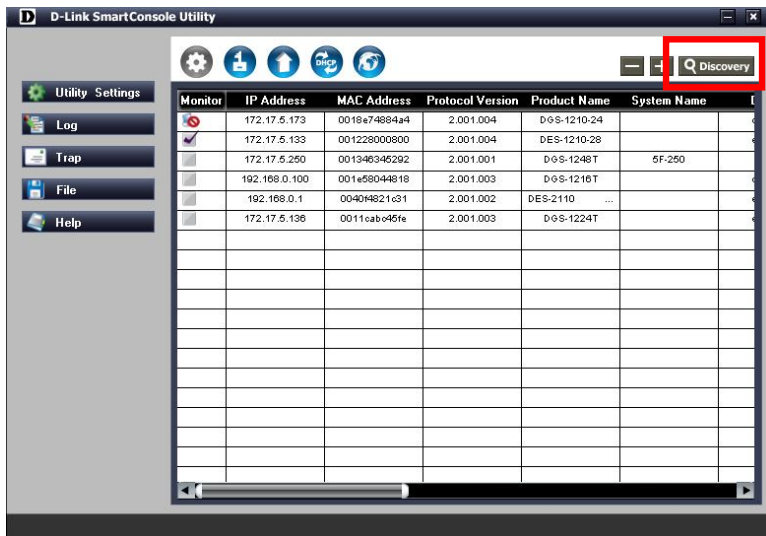




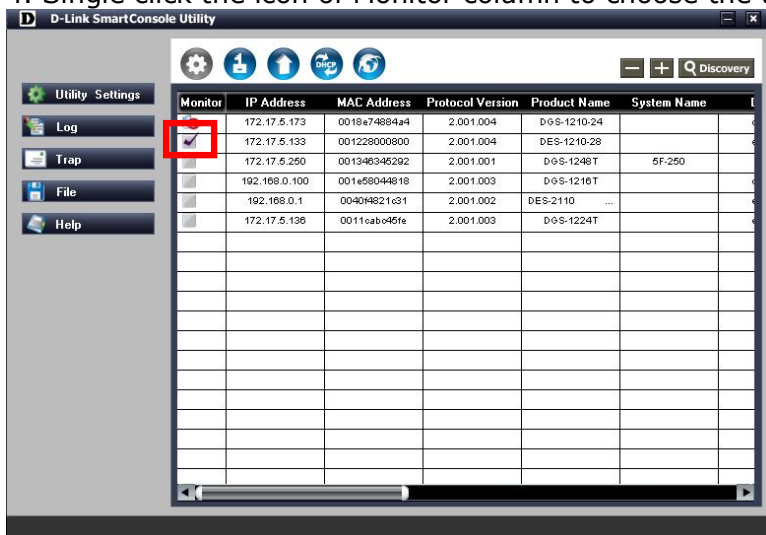
1. Connect a workstation installed with java SE runtime environment to any switch port of the device
2. Execute SmartConsole Utility



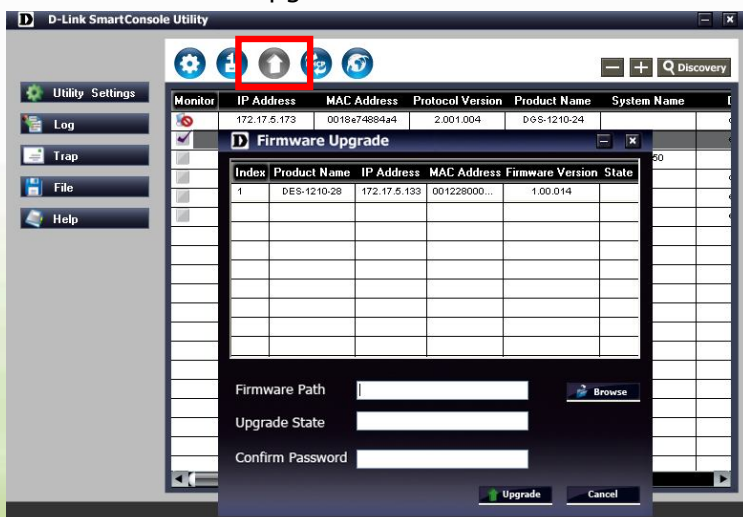
3. Click Discovery button to search target switch



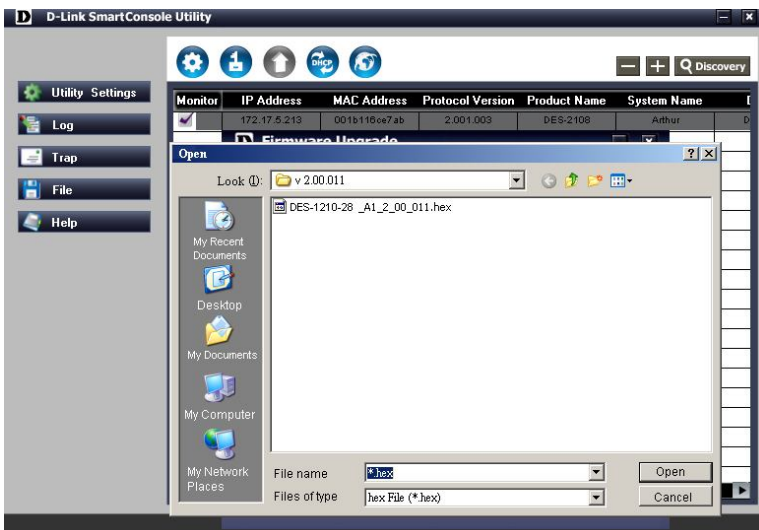
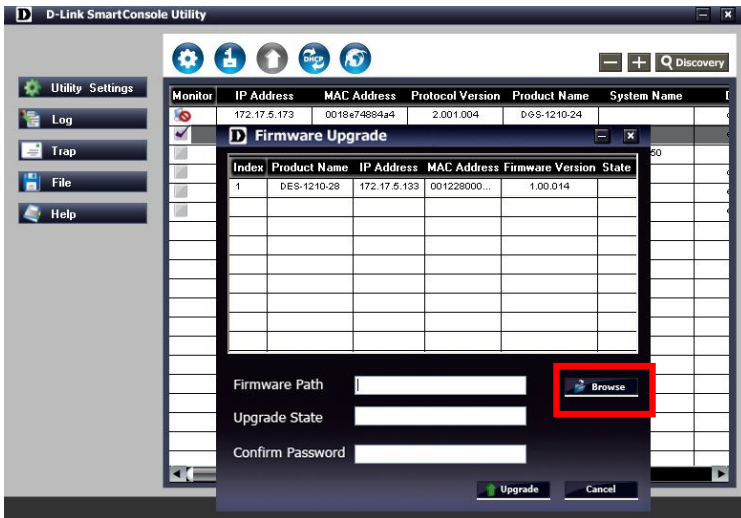
4. Single click the icon of Monitor column to choose the target switch



5. Click Firmware Upgrade button



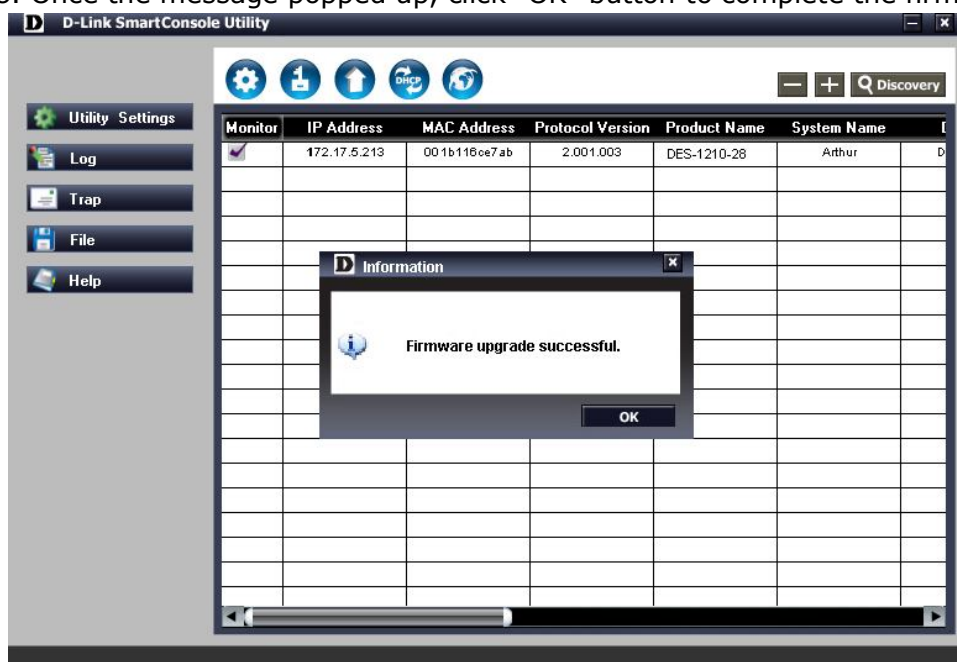
6. Click Browse button and select the firmware file (Model name\_HW ver.\_FW ver. .hex) on your local hard drive.



7. Enter password and click "Upgrade" button to start firmware upgrade. The default password is "admin".



8. Once the message popped up, click "OK" button to complete the firmware upgrade



## New Features:

Firmware Version	New Features
V2.02.002 V2.11.002	Add a pre-defined OUI for D-Link IP Surveillance and NVR devices in function Auto Surveillance VLAN.
V2.10.000	None
V2.01.002	<ol style="list-style-type: none"> <li>1. Add Portuguese Web UI</li> <li>2. Add more configurations in Auto Surveillance VLAN</li> </ol>
V2.00.011	<ol style="list-style-type: none"> <li>1. Web GUI supports multiple languages</li> <li>2. Auto Surveillance VLAN</li> <li>3. ARP Spoofing Prevention</li> <li>4. DHCP Server Screening</li> <li>5. DHCP Auto Configuration</li> <li>6. Multicast Filtering: An option to filter or forward unregistered groups.</li> <li>7. SNMPV3</li> <li>8. SSL</li> <li>9. Debug info command</li> </ol>
V1.00.021	None
V1.00.018	None
V1.00.014	First Release

## Changes of MIB & D-View Module:

The new features of MIB file are also included in the corresponding D-View module. Please download the D-View module from <http://tsd.dlink.com.tw>. For detailed changes of MIB content, please refer to the modification history in each MIB file.

Firmware Version	MIB File	New Features
V2.11.002 V2.10.000	DES-1210-28_B1_2_10_000.mib	None (for DES-1210-28 ver.B1 only)
V2.02.002 V2.01.002	DES-1210-08P_AX_2_01_001.mib DES-1210-28_AX_2_01_001.mib DGS-1210-28P_AX_2_01_001.mib DES-1210-52_AX_2_01_001.mib	Add configurations in Auto Surveillance VLAN
V2.00.011	DES-1210-08P_AX_2_00_004.mib	First release
V2.00.011	DES-1210-28_AX_2_00_004.mib DES-1210-28P_Ax_2_00_001.mib DES-1210-52_AX_2_00_004.mib	<ol style="list-style-type: none"> <li>1. Auto Surveillance VLAN</li> <li>2. ARP Spoofing Prevention</li> <li>3. DHCP Server Screening</li> <li>4. DHCP Auto Configuration</li> <li>5. Multicast Filtering</li> <li>6. SNMPV3</li> <li>7. SSL</li> </ol>
V1.00.021	DES-1210-28_A1_1_00_014.mib	The chipset with date code 0945 or later has potential risk of incorrect memory allocation, so this new firmware integrates a patch code to avoid malfunction of switch.
V1.00.018	DES-1210-28_A1_1_00_014.mib DES-1210-52_A1_1_00_014.mib	Make some object descriptions easy to understanding.
V1.00.014	DES-1210-28_A1_1_00_013.mib DES-1210-52_A1_1_00_013.mib	First release

Firmware Version	D-View Module File	New Features
V2.11.002 V2.10.000	DV_DES-1210-28_V2.0.2.3_FW_V2.10.000.exe	None (for DES-1210-28 ver.B1 only)
V2.02.002 V2.01.002	DV_DES-1210-08P_V2.0.1.0_FW_v2.01.002.exe DV_DES-1210-28_V2.0.1.0_FW_v2.01.002.exe DV_DES-1210-28P_V2.0.1.0_FW_V2.01.002.exe DV_DES-1210-52_V2.0.1.0_FW_v2.01.002.exe	Add configurations in Auto Surveillance VLAN
V2.00.011	DV_DES-1210-08P_V2.0.0.11_FW_v2.00.011.exe	First release

V2.00.011	DV_DES-1210-28_V2.0.0.11_FW_v2.00.011.exe DV_DES-1210-28P_V2.0.0.11_FW_v2.00.011.exe DV_DES-1210-52_V2.0.0.11_FW_v2.00.011.exe	<ol style="list-style-type: none"> <li>1. Auto Surveillance VLAN</li> <li>2. ARP Spoofing Prevention</li> <li>3. DHCP Server Screening</li> <li>4. DHCP Auto Configuration</li> <li>5. Multicast Filtering</li> <li>6. SNMPV3</li> <li>7. SSL</li> </ol>
V1.00.021	DV_DES-1210-28_V1.0.0.10_FW_v1.00.018.exe	None
V1.00.018	DV_DES-1210-28_V1.0.0.10_FW_v1.00.018.exe	Modified Legal Trademarks
	DV_DES-1210-28_V1.0.0.9_FW_v1.00.018.exe DV_DES-1210-52_V1.0.0.9_FW_v1.00.018.exe	None
V1.00.014	DV_DES-1210-28_V1.0.0.5_FW_v1.00.014.exe DV_DES-1210-52_V1.0.0.5_FW_v1.00.014.exe	First Release

## Changes of Command Line Interface:

The section below only shows command line changes that may bring backward compatibility issues with configuration settings for previous version of firmware. Any new feature commands that do not have backward compatibility issues are not included in the below section.

Firmware Version	Changes
V2.11.002	None
V2.02.002	None
V2.10.000	None
V2.01.002	None
V2.00.011	None
V1.00.021	None
V1.00.018	None
V1.00.014	First release

## Problem Fixed:

Firmware Version	Problems Fixed
V2.11.002	None
V2.02.002	<ol style="list-style-type: none"> <li>1. Some internal PoE parameters on DES-1210-08P/28P are changed in order to give some tolerance to potential cable loss.</li> <li>2. Fixed password setting problem on some character combinations.</li> <li>3. Fixed the problem that some IP packets cannot pass through a gateway.</li> </ol>
V2.10.000	None
V2.01.002	None
V2.00.011	The menu on the left does not display correctly on Firefox browser V3.6 under 1920*1080 screen resolutions. ( <a href="#">HQ20100311000005</a> )
V1.00.021	The DES-1210-28 chipset with date code 0945 or later has potential risk of incorrect memory allocation, so this new firmware integrates a patch code to avoid malfunction of switch.
V1.00.018	<p>The new firmware v1.00.18 fixes the following problems and will be the firmware version for the first shipment:</p> <ol style="list-style-type: none"> <li>1. Enabling either Bandwidth Control or Safeguard Engine on DES-1210-28/52 may cause the switch to be unable to pass traffic, and SmartConsole Utility may fail to discover the switch.</li> <li>2. If the Asymmetric VLAN is enabled, then the default VLAN is not allowed to remove all members.</li> <li>3. In the "ACL Configuration Wizard" page, if users select from IPv4 address to Any then the Service Type will be unable to choose and key in text.</li> <li>4. If users create different rules with the same Service Type and Action, the switch will not establish one profile automatically.</li> <li>5. When 802.3ad LACP on DES-1210-28/52 is enabled, the switch may reboot automatically if the link partner is turned on for LLDP.</li> </ol>
V1.00.014	First Release

\* D-Link tracking number is enclosed in ()

## Known Issues:

Firmware Version	Issues	Workaround
V2.11.002 V2.10.000	<b>DES-1210-28, B1</b> Due to chipset's limitation, the switch can detect cable length on Gigabit ports on 1000M speed mode, but not on 100M.	Detect cable length on 1000M speed mode.
V2.02.002 V2.01.002	<b>DES-1210-28/52/28P, A1</b> <ol style="list-style-type: none"> <li>1. <b>QoS:</b> When congestion occurs and queue handling mode is set to Strict, bandwidth was allocated unequally to the ingress flows that have same priority.</li> </ol>	None

	<p><b>2. D-View Module:</b> Information is not synchronous between Web UI and D-view, but it does not affect functions.</p> <p><b>3. D-View Module:</b> Setting failure when setting the 4 LLDP parameters at the same time.</p>	<p>None</p> <p>Setting LLDP through Web GUI</p>
<p>V2.02.002</p> <p>V2.01.002</p> <p>V2.00.011</p>	<p><b>DES-1210-08P, A1</b></p> <p>Cable Length Display: While connecting a 5-meter cable to the switch, and then immediately unplugging the cable, the Cable Length information is not real-time but is updated after 3 seconds.</p>	<p>None</p>
V1.00.021	None	None
V1.00.018	None	None
V1.00.014	<p>The average throughput in Chariot TCP Multi-ports to one (ex: 24 100M Ports to 1 1000M port) throughput test will automatically be lowered when port speed is set to be auto mode on the gigabit port.</p>	<p>Config Gigabit port speed/duplex to 1000Mbps full force mode.</p>

## Related Documentation:

- DES-1210 Series Web UI Reference Guide
- DES-1210 Series Getting Started Guide